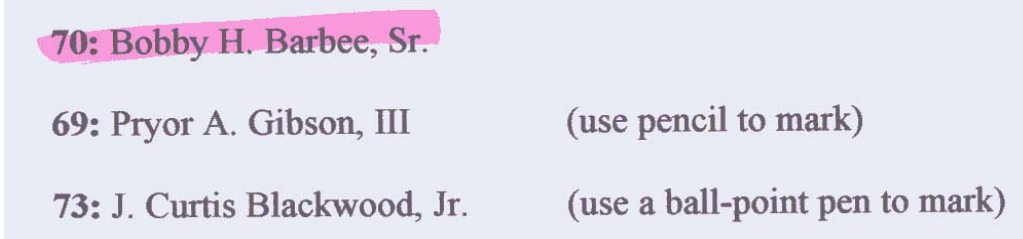


- Once you have located the district number for a particular constituent, we ask that you mark on the back of the postcard (where they have signed), in the upper right hand corner with the marker color corresponding with their districts. In Mecklenburg Co., the districts are as follows:



In Union Co., the districts are as follows:



- If you have any questions (or you run out of anything), please feel free to call Ted Frazer (704) 532-6854 or Katie Hubicki at (704) 563-7080

INSTRUCTIONS

- When it comes to sorting out the voters, there are many ways to find a voter’s district number.
 - Included in your packet is an 8.5” x 11” map of Mecklenburg County’s precinct boundaries (and for some of you, there is also a map of Union County’s precincts), from which some of your constituents may be able to tell you’re their precinct, if they so desire. We would suggest not making everyone find their own precinct, but providing that option would be nice.
 - There is an alphabetical list of all of the Charlotte streets. From this, you should be able to find all of the precinct numbers. The layout of the document is as follows:

Field #	Field Name	Data Type	Max Length	Notes/Sample
Street Data				
1	Street Direction	Text	2	(E) – East (W) – West (S) – South (N) – North
2	Street Name	Text	20	Street name
3	Blank	-	-	-
4	House Number (Start)	Number		First available house number on street
5	House Number (End)	Number		Last available house number on street
6	Odd/Even/All	Text	1	(O) – Odd (E) – Even (A) – All Part of street in precinct portion indicated.
7	Precinct Portion	Number		Precinct portion street is in.

So, for example, if your constituent has an address of 143 East Wendy Lane, you would look under the W’s for street name, under the direction E, and then look for the House numbers which 143 falls between. Finally, you would look to see if that precinct only encompassed the odd numbers on that street (in which case, 143 would be in that precinct), the evens (then look for the odd part of the street), or all (143 would be a part).

- Finally, you can use the web. Either go to <http://maps.co.mecklenburg.nc.us/website/boevie/> and input the people’s addresses. Or, if you aren’t sure of the address, you can go to <http://www.meckboe.org/>, look under Voter Info, and then Personalized Voter Information. There, you can input the first and last names of people. Click on Find My Information. From that screen, it will take you to another where you can choose from multiple people of the same name. Once you find your person, simply click on My Political Districts and look for NC House District.